

USB Signal Tower TYPE: LR6-3USB□-RYG / LR6-USB□

Demo Application Software Instruction Manual

1. Notice to Customer

- ◇ The software is demonstration software for a USB signal tower. You cannot use this product for any other purpose. Additionally, not all operations are available.
- ◇ For details on using the USB signal tower, **please download and refer to the Instruction Manual [WEB version] from our website.**
- ◇ About Trademarks and Registered Trademarks
 - Microsoft® and Windows® are either registered trademarks or trademarks of Microsoft Corporation in the United States and/or other countries.
 - Company names and product names described in this document are trademarks or registered trademarks of those respective companies.

2. Recommended Operation Environment

Operating System	Windows 7 (32 bit/64 bit) Windows 8 (32 bit/64 bit) *Excludes Windows 8 RT Windows 8.1 (32 bit/64 bit) *Excludes Windows 8.1 RT Windows 10 (32 bit/64 bit)
CPU	1GHz or faster
Memory	1GB or more
Hard disk	10MB or more free space
Display	Screen resolution: 1024 x 768 or more

※This software is exclusive for LR6-3USB□-RYG and LR6-USB□ models.

※Do not use with LU7-02S-USB. It could reduce the performance, or even cause failure, of the LU7-02S-USB and host PC.

3. Control LED Unit Models

LED color to control	Compatible LED unit model
R (Red)	LED unit (Red): LR6-E-R(Z)
Y (Yellow)	LED unit (Yellow): LR6-E-Y(Z)
G (Green)	LED unit (Green): LR6-E-G(Z)
B (Blue)	LED unit (Blue): LR6-E-B(Z)
C (White)	LED unit (White): LR6-E-C

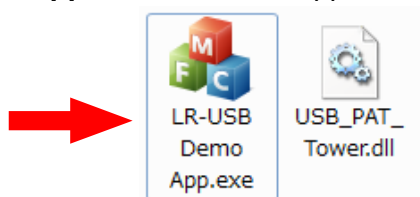
※LED units LR6-E-RZ, LR6-E-YZ, LR6-E-GZ, and LR6-E-BZ can be controlled, but the signal tower image remains static.

※Multi-color LED unit LR6-E-MZ is not supported.

4. Operation

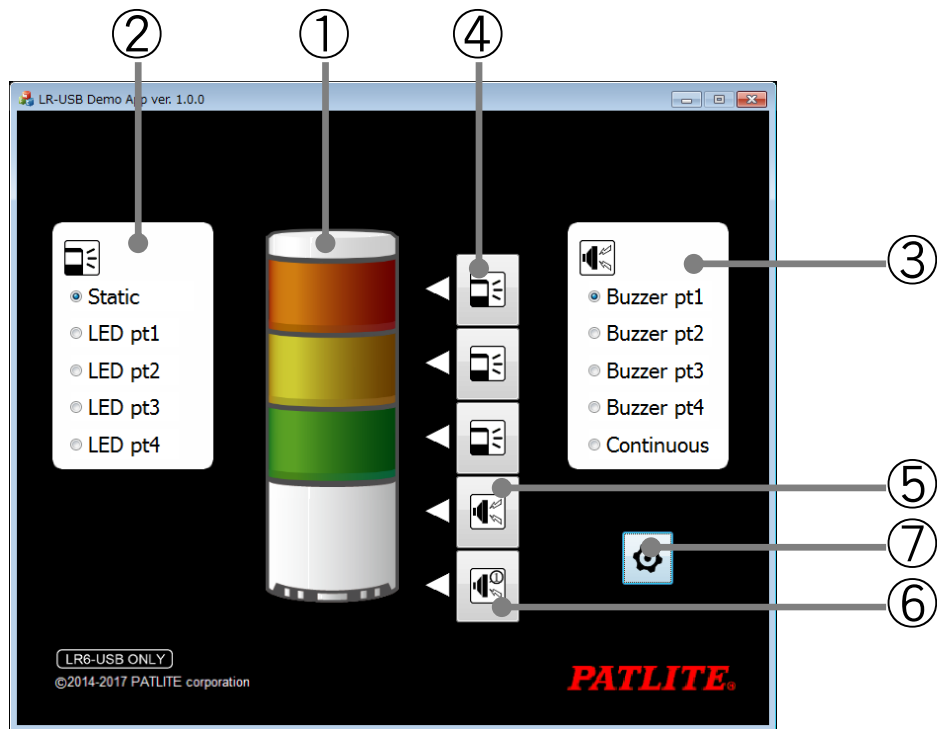
(1) Startup Method

- Double-click **LR-USB Demo App.exe** to start the application.

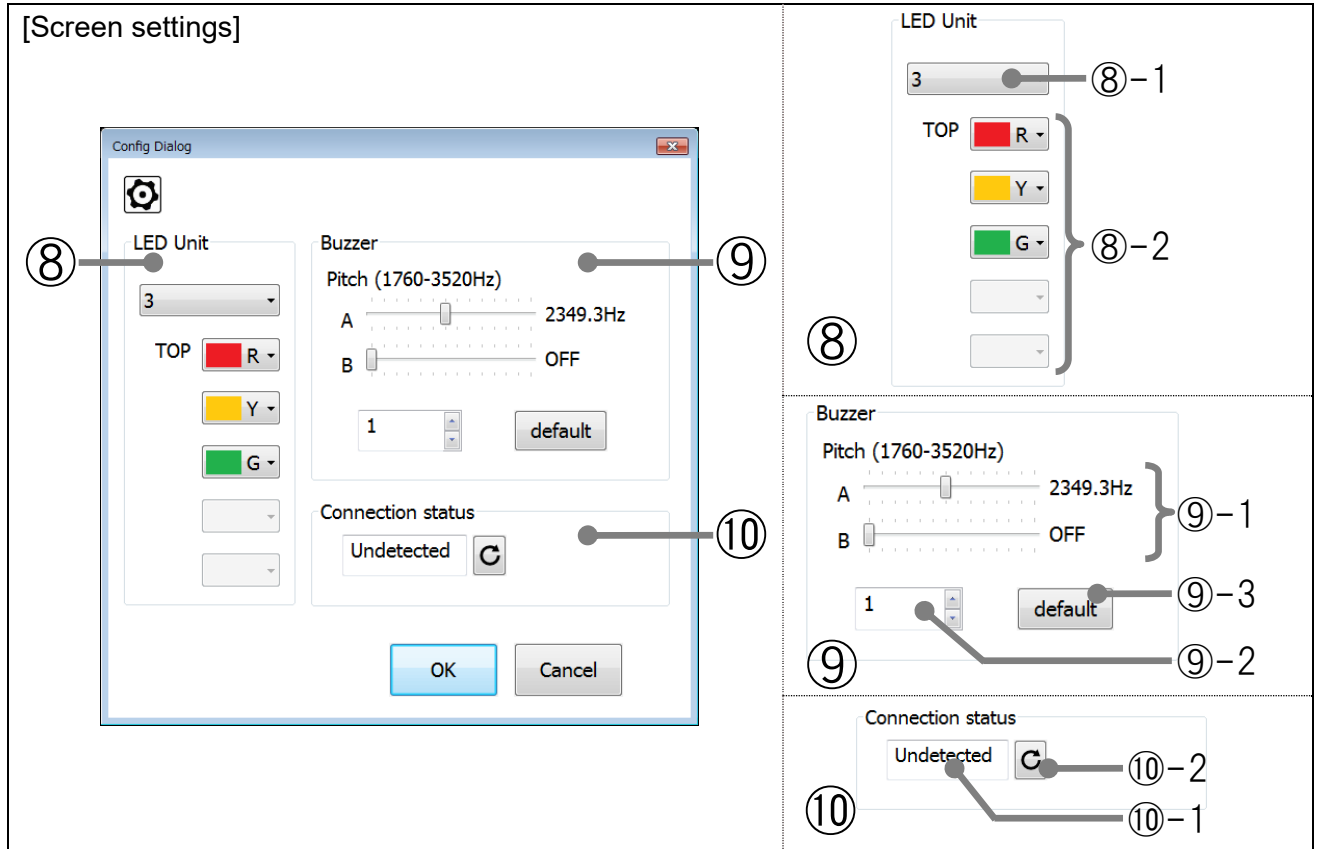


(2) Screen Description

[Startup screen]



Number	Name	Function
①	Signal tower image	-
②	Select LED unit control	Select the option for the LED unit control. ·Static : Light on ·LED pt1 : LED Pattern 1 on ·LED pt2 : LED Pattern 2 on ·LED pt3 : LED Pattern 3 on ·LED pt4 : LED Pattern 4 on
③	Select buzzer control	Select the option for the buzzer control. ·Buzzer pt1 : Sound Pattern 1 on ·Buzzer pt2 : Sound Pattern 2 on ·Buzzer pt3 : Sound Pattern 3 on ·Buzzer pt4 : Sound Pattern 4 on ·Continuous : Sound on
④	LED unit control button	Operates each LED unit.
⑤	Buzzer control button 1	Operates the buzzer. (Continuous operation)
⑥	Buzzer control button 2	Operates the buzzer. (Operate number of times)
⑦	Screen settings button	Displays the screen settings.



Number	Name	Function
⑧	LED Unit control settings	<p>Set up the number and type of LED units.</p> <p>⑧-1: Set up the number of LED units. (1 to 5)</p> <p>⑧-2: Set up the type of LED units. (R, Y, G, B, or C)</p> <p>*You cannot set up multiple LED units of the same type.</p>
⑨	Buzzer control settings	<p>Set up the buzzer pitch and number of times to play the buzzer.</p> <p>⑨-1: Set up the pitch for sound A and sound B. (OFF, or 1760.0Hz to 3520.0Hz)</p> <p>⑨-2: Emit the buzzer when buzzer control button 2 is pressed. Set up the number of times. (1 to 15)</p> <p>⑨-3: Returns the buzzer control settings to its default values.</p>
⑩	Connection Status display	<p>Displays the USB connection status.</p> <p>⑩-1: Displays the USB connection status. Online: Connected Undetected: Not connected</p> <p>⑩-2: Refreshes the display of the USB connection status.</p>

PATLITE Corporation G2J

PATLITE Corporation ※Head office	■ www.patlite.com/
PATLITE (U.S.A.) Corporation	■ www.patlite.com/
PATLITE Europe GmbH ※Germany	■ www.patlite.eu/
PATLITE (SINGAPORE) PTE LTD	■ www.patlite-ap.com/
PATLITE (CHINA) Corporation	■ www.patlite.cn/
PATLITE KOREA CO., LTD.	■ www.patlite.co.kr/
PATLITE TAIWAN CO., LTD.	■ www.patlite.tw/
PATLITE (THAILAND) CO., LTD.	■ www.patlite.co.th/
PATLITE MEXICO S.A. de C.V.	■ www.patlite.com.mx/

世界中に「安心・安全・楽楽」をお届けする

株式会社 **パトライト**

www.patlite.co.jp