

**PATLITE®**  
New Frontiers in Safety, Security and Comfort.

# Brilliant Illumination, Broader Coverage

Ideal for  
Workstations  
Machine Lighting  
Control Cabinets



LED Work Light

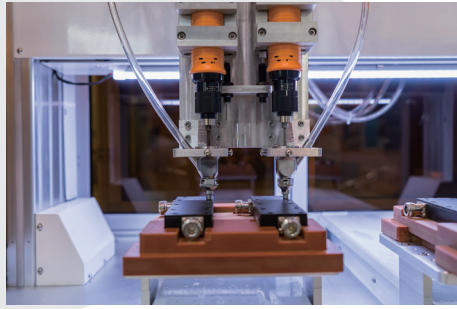
**CWF**

# Effectively illuminate your work spaces to increase productivity

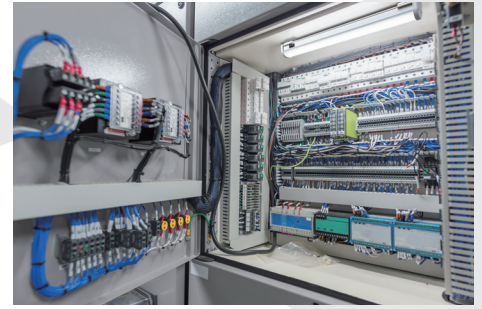
## Workstations



## Machine Lighting



## Control Cabinets

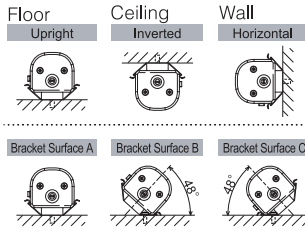


## User-Friendly Operation

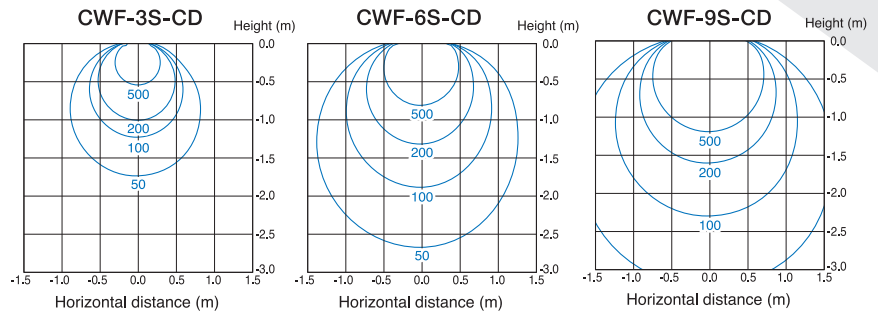
### Rocker Switch



### Simple Installation



## Illuminance Distribution Chart (lx)



## Brackets

### Standard Mounting Bracket



※ Mounting screws not included.  
Recommended Torque : 1.5Nm

### Option Magnetic Mounting Bracket



※ Accessory Bracket Screw 2pcs included

### Option Swivel Bracket

CWF-001

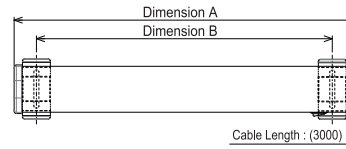


Adjustment Angle 130°

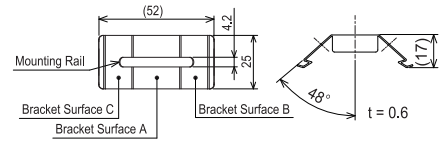
※ Accessory Bracket Screw 2pcs included.  
Mounting screws not included.

## Diagrams

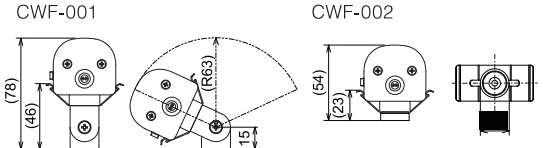
### LED Work Light



### CWF Standard Mounting Bracket (2 pcs)



Model	Dimension A Body Length	Dimension B Bracket Pitch
CWF3S-□-CD	300	260
CWF6S-□-CD	600	560
CWF9S-□-CD	900	860



## How to Order

Type	Full Length	Rated Voltage /Standards	Luminous Color
<b>CWF</b>	↓	-	↓
<b>3S</b> : 300mm			<b>CD</b> : Daylight
<b>6S</b> : 600mm			
<b>9S</b> : 900mm			
		<b>24</b> : 24V DC / UL LISTED, CE ※1	
		<b>M2U</b> : 100-240V AC / UL LISTED	
		<b>M2C</b> : 100-240V AC / CE, KC	

※1 CWF[3S][6S] type only

## Specifications

Model	CWF3S-24	CWF6S-24	CWF3S-M2□	CWF6S-M2□	CWF9S-M2□
Color Temperature (typ.)	5700 K				
Illuminance (typ.) (Center) 1.0m	165 lx	320 lx	150 lx	320 lx	445 lx
Total Luminous Flux (typ.)	500 lm	1000 lm	500 lm	1000 lm	1500 lm
Rated Voltage	24V DC		100-240V AC (50/60Hz)		
Operating Voltage Range	21.6-26.4V DC		90-264V AC		
Rated Power Consumption	5 W	10W	5 W	10 W	15 W
Operating Ambient Temperature	- 25 °C ~ + 60 °C		- 20 °C ~ + 50 °C		
Operation Ambient Humidity	90% RH or less, no condensation				
Mounting Location	Indoor				
Mounting Direction	All Directions				
Protection Rating	IP20				
Mass (Tolerance ±10%)	0.42 kg	0.57 kg	M2U:0.53 kg M2C:0.46 kg	M2U:0.68 kg M2C:0.6 kg	M2U:0.84 kg M2C:0.76 kg

## PATLITE Corporation

International Sales Division  
4-1-3, Kyutaromachi, Chuo-ku, Osaka 541-0056 Japan TEL:+81-6-7711-8953 FAX:+81-6-7711-8961 E-mail: overseas@patlite.co.jp

### PATLITE (U.S.A.) Corporation

20130 S. Western Ave. Torrance, CA 90501, U.S.A. TEL:+1-310-328-3222 FAX:+1-310-328-2676 E-mail: sales@patlite.com

### PATLITE (SINGAPORE) PTE LTD

No.2 Leng Kee Road, #05-01 Thye Hong Centre, Singapore 159086 TEL:+65-6226-1111 FAX:+65-6324-1411 E-mail: sales@patlite.com.sg

### PATLITE (CHINA) Corporation

Room 1102-1103, No.55, Lane 777, Guangzhong Road (West), Zhabei District, Shanghai, China 200072 TEL:+86-21-6630-8969 FAX:+86-21-6630-8938 E-mail: sales@patlite.cn

### PATLITE Europe GmbH

Am Soeldnermoos 8, D-85399 Hallbergmoos, Germany TEL:+49-811-9981-9770-0 FAX:+49-811-9981-9770-9 E-mail: info@patlite.eu

### PATLITE KOREA CO., LTD.

A-2603, Daesung D-POLIS, 606, Seobusaet-gil, Geumcheon-gu, Seoul, 08504, Korea TEL:+82-2-523-6636 FAX:+82-2-861-9919 E-mail: sales@patlite.co.kr

### PATLITE TAIWAN CO., LTD.

7F, No. 91, Huayin St, Datong District Taipei, Taiwan R.O.C TEL:+886-2-2555-1611 FAX:+886-2-2555-1621 E-mail: info@patlite.tw

### PATLITE (THAILAND) CO., LTD.

Olympia Thai Tower, 15th Floor 444 Ratchadapisek Road Samsenok, Huay Kwang Bangkok 10310, Thailand TEL:+66-2-541-5431 FAX:+66-2-541-5429 E-mail: sales@patlite.co.th

<http://www.patlite.com>

● PATLITE, the PATLITE logo are either registered trademarks or trademarks of PATLITE Corporation in JAPAN and/or other countries.  
● The names of other companies and products are trademarks or registered trademarks of their respective companies.



### PATLITE ECO PROJECT

For the benefit of mankind and the earth, Patlite is committed to developing environmentally friendly products.

### CAUTION

To ensure correct use of these products, read the "Instruction Manual" prior to use. Failure to follow all safeguards can result in fire, electric shock, or other accidents. Specifications are subject to change without notice.

0-AG12A EN 1802 A