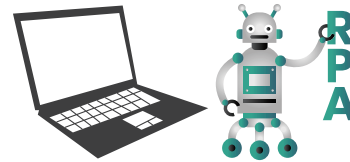


# Change Work Patterns Through RPA Visualization

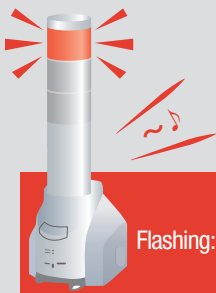
## What is RPA?

- Transcribe data from Excel
  - Sort and save customer email attachments
  - Transfer data from PDF to Excel
- And so on



Notify the RPA's operating status with a network signal tower.

## NEC Software Robot Solution Partnership Example



Flashing: Unexpected data



Flashing: Data being entered into Excel  
Off: Data entry into Excel completed



Flashing: Robot starting  
Off: Robot process completed

### Before

Excel data was being posted into the company's system even when there was unreadable data. This came to light when the logs were reviewed and corrections needed to be quickly made.

### After

Able to see the operation status of the RPA through the signal tower, no need to monitor the PC and system down time was reduced.

### Method

NEC Software Robot Solution added capabilities to their software to integrate various error scenarios with signaling functions. PATLITE's Network Monitoring Signal Tower receives these signals and notifies personnel through light, alarms and messages according to the robot's operation.

### Model

Model: NHL-3FV2 / NHP-3FV2